



MODULAR
TINY HOUSES
VERSION A



ENZO takes on all aspects of architecture: design, urbanism, landscapes and interiors. We make sure the building and its surroundings are one integrated design. With inspiration and our full attention we bring this integrated approach into practice. We don't do this alone, but together with our business and private clients. And together with our team. Meanwhile the ENZO team counts 18 colleagues. The name ENZO reflects the team-feeling. 'We didn't want to become architecture firm Van Rijn and Abdul. We do it together.'

ENZO architectuur N interieur

+31 (0)172 50 30 90
info@enzoarchitecten.nl



Aulis Lundell Ltd is a leading Scandinavian manufacturer of cold rolled LGS profiles, sustainable offsite modular buildings and prefabricated panelized systems.

The company is a Finnish family business and has delivered LUNDELL-PROFILE products manufactured from hot dip galvanized steel plate by roll forming technology since 1980.

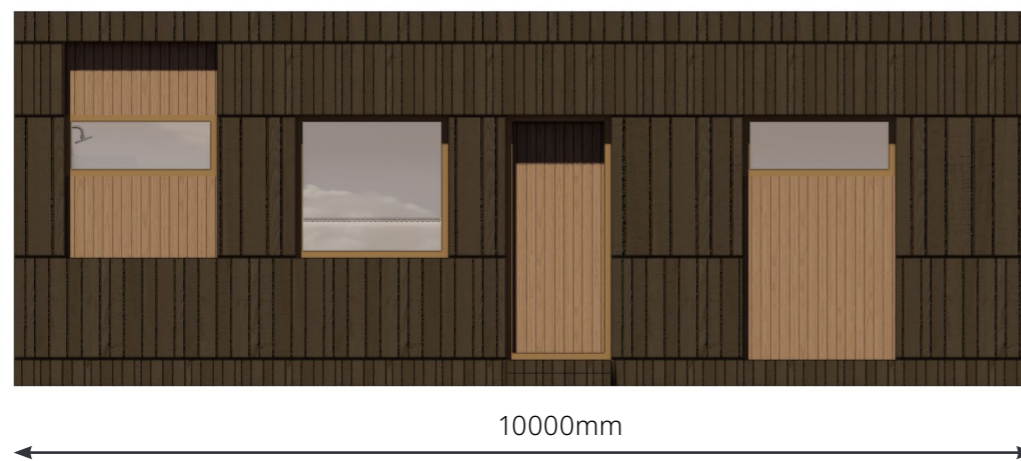
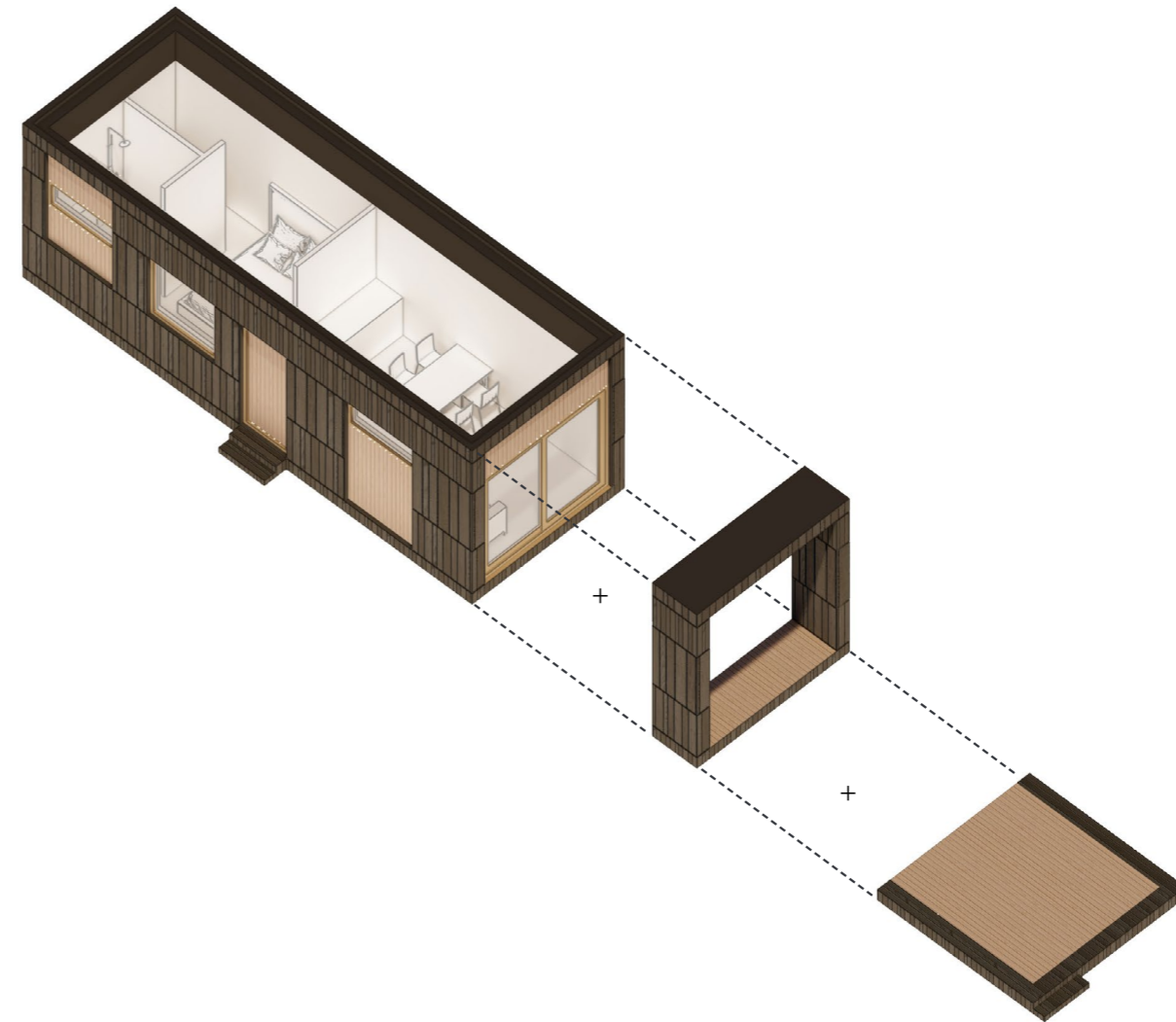
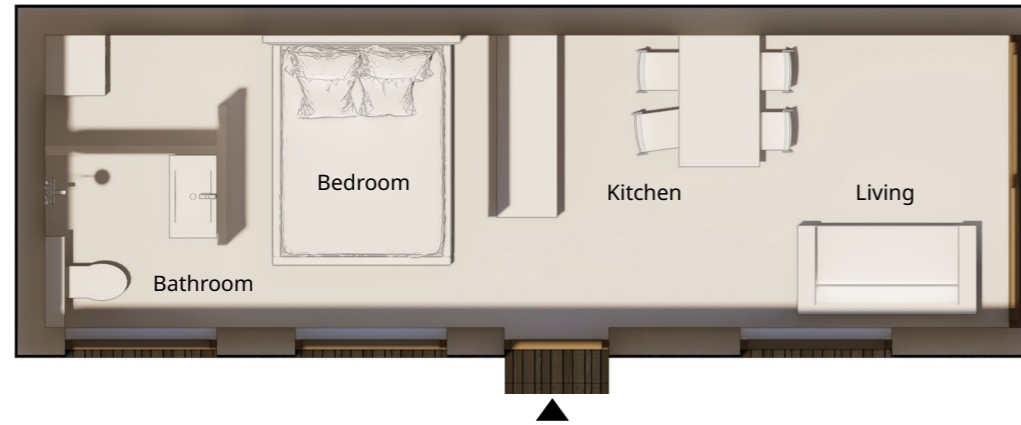
Aulis Lundell Ltd is located in Lohja, Finland and operates in 6000 m² of product facilities. Additional factory space of 5000 m², which will accumulate the production capacity of both modules and panels dramatically, is under construction and will be ready in summer 2023 to meet the demands of MMC customers throughout Europe.

Aulis Lundell Oy
Edzo Bosma

+31 (0)85 021 09 01 (Tel)
+31 (0)6 5105 4280 (Mob)
edzo.bosma@aulislundell.com

TINY HOUSES BASE UNIT

The base unit can be complemented with a frame and terrace.



TINY HOUSES
BASE UNIT

The base unit can be complemented with a frame and terrace.



TINY HOUSES
COMBINING

The different units can be combined to form an playful ensemble.



TINY HOUSES
COMBINING

This way the number of blind facades is reduced.



TINY HOUSES
COMBINING

Because of the playfull ensemble there are intresting places for people to stay and socialize.



IMPRESSIE



IMPRESSIE



MATERIALS
IMPRESSIONS



Wood cladding - Planks of different sizes - two tones to distinguish openings in the facade.



Thin bricks - Lightweight brick facade
Feldhaus klinker - Thin bricks



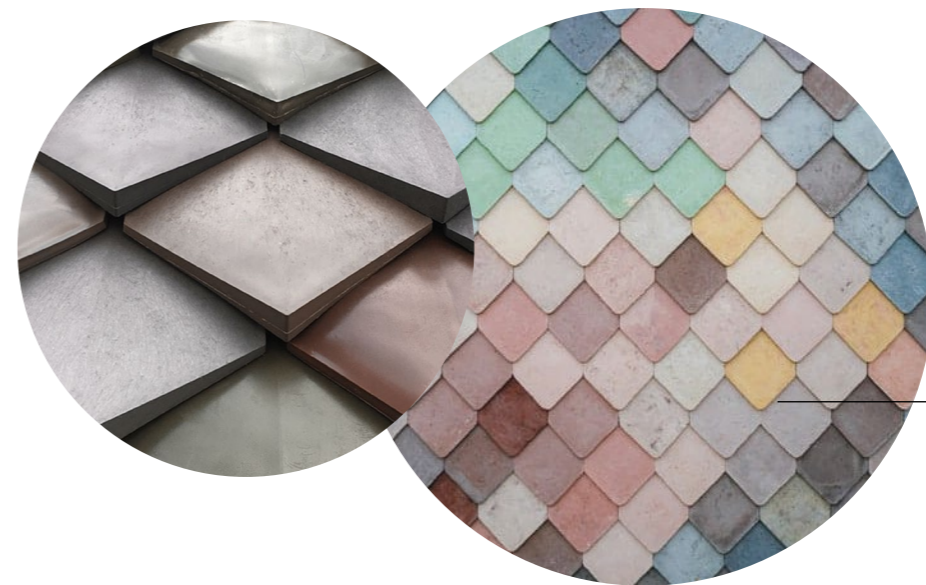
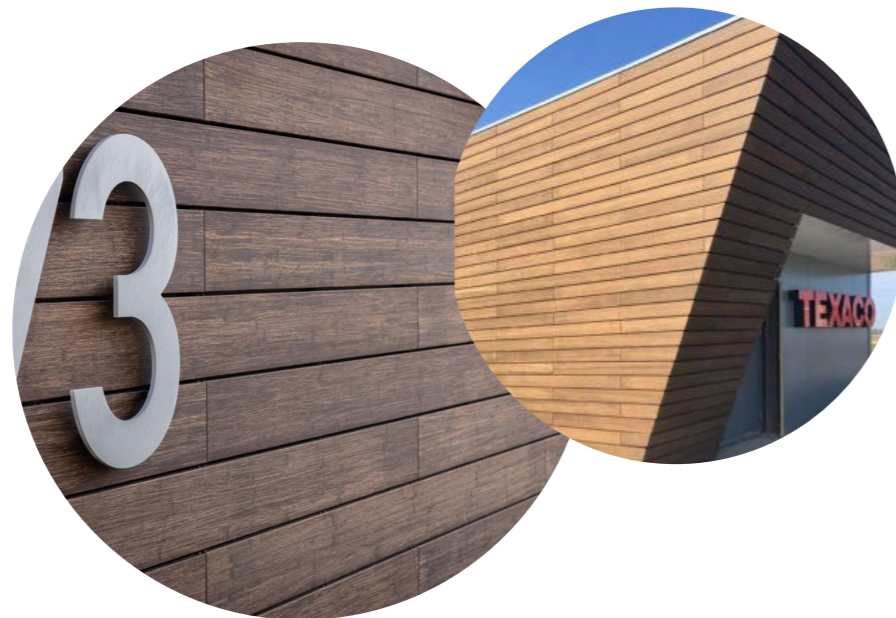
MATERIALS
IMPRESSIONS



Bamboo Cladding - Comparable to an ordinary wood facade but reducing the carbon footprint
Moso Bamboo - Bamboo x-treme cladding

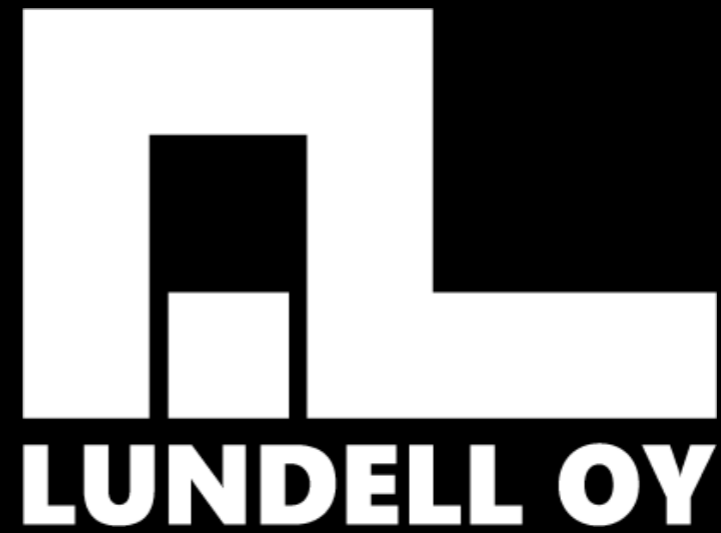


Recycled plastic tiles - Upcycled diamond shaped shingles made from PVC waste
Pretty plastic - 'First One' - Terracotta color





ENZO[®]



www.enzoarchitecten.nl

www.aulislundell.com