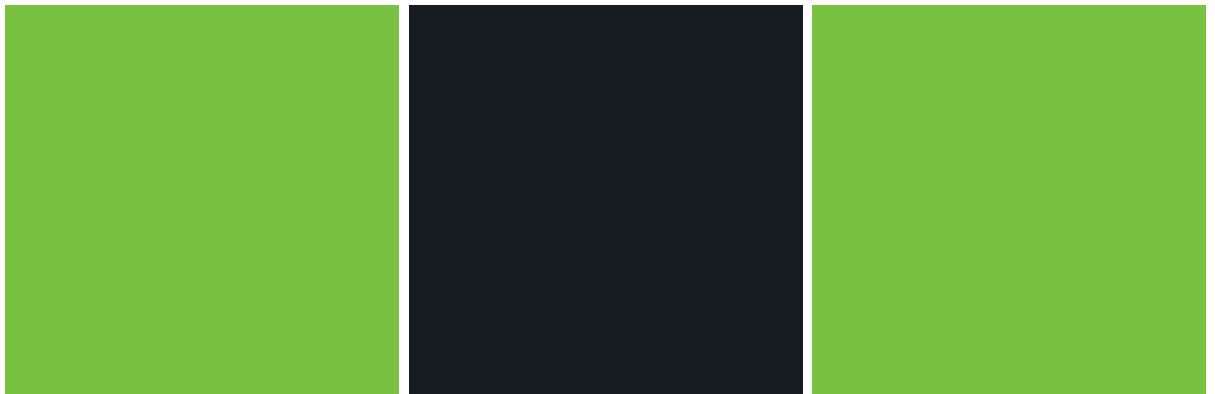




Liune

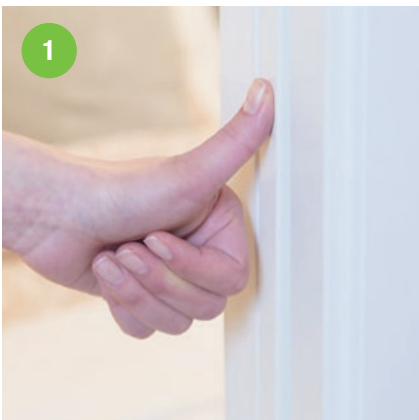


RESIDENT'S GUIDE

RESIDENT'S GUIDE



- Do not push the door leaf against the sliding direction. Do not subject the door to any use of force.
- Avoid strong impacts of the door leaf to the counter jamb.
- It is forbidden to attach cabinets or other furniture to the Liune frame unless the attachment is enabled in the design and assembly phase by installing a furniture support.



1

DOOR OPERATION

To open the door, pull the handle and press the end of the door to slide it inside the wall. The pop-up latch will lock it in place. To move the door, press the end of the door at the height of the handle until the pop-up latch pushes the door edge out of the wall. To close the door, pull the handle in the door leaf.

2

DOOR MAINTENANCE

It is permissible to clean the surfaces with a towel moistened in mild water-detergent solution. The Liune door system does not require other maintenance.

The pop-up latch is located in the door. The door can be replaced following new interior design trends. The door can easily be replaced by removing the jambs.

RESIDENT'S GUIDE

3

SAFETY

Ensure that inappropriate objects do not enter the space between the door and the jambs. When wiping jamb and door surfaces, be cautious of any sharp edges within the spaces between the jambs. All materials used by Liune meet the requirements of the M1 indoor air classification.



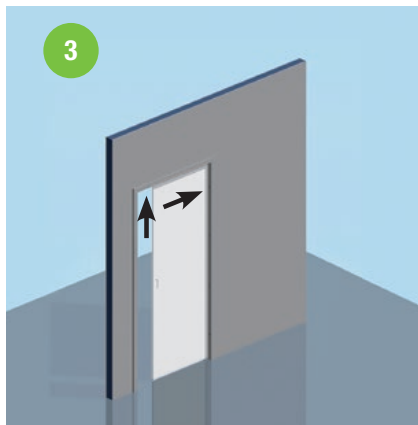
 Slots for electrical fittings



633-1233
Frame pocket



2



3



4

4

ATTACHING OBJECTS TO THE LIUNE WALL

Check the length of screws and anchors before attachment. The maximum length of fasteners is 22 mm.

Remove the door from the Liune pocket when inserting screws or anchoring fasteners to the pocket walls.

LOCATION OF THE LIUNE FRAME IN THE WALL:

(Marked in red in the figure) The Liune frame is located where the door slides inside the partition wall, i.e. Liune pocket. The width of the Liune frame is approx. two times the width of the doorway.



Liune Door Sales Office:
Aulis Lundell Oy
www.liunedoor.com

LIUNE
NORDIC
DESIGN



EPD No. RTS_38_19
LIUNE -door system
with glass/MDF door



Aulis Lundell Oy's production is certified by
the ISO9001 -quality management system.
The certification has been witheld since 2004.



Business environmentally certified since 2004.
Liune Door is patented.



**OHJEESSA OLEVIEN KUVIEN LAINAAMINEN ON SALLITTUA VAIN
AULIS LUNDELL OY:N ASIAKKAILLE JA YHTEISTYÖKUMPPANEILLE,
KUN LÄHDE MAINITAAN. KUVIIN JA NIIHIN LIITTYVIIN TEKSTEIHIN PIDÄTÄMME
OIKEUDEN TEHDÄ MUUTOKSIA.**

**ATT LÅNA BILDERNA I DENNA INSTRUKTION ÄR TILLÅTET ENDAST FÖR
AULIS LUNDELL OY:S KUNDER OCH SAMARBETSPARTNERS OM KÄLLAN NÄMNS.
VI FÖRBEHÅLLER OSS RÄTTEN ATT GÖRA ÄNDRINGAR PÅ BILDERNA OCH DE
TILLHÖRANDE TEXTERNA.**

**TO BORROW THE PICTURES IN THIS INSTRUCTION MANUAL IS ALLOWED TO
AULIS LUNDELL OY'S CUSTOMERS AND PARTNERS IF THE SOURCE IS MENTIONED.
WE RESERVE THE RIGHT TO MAKE CHANGES TO THE PICTURES AND
THE ACCOMPANING TEXTS.**

**HET GEBRUIK VAN DE AFBEELDINGEN UIT DEZE MONTAGE INSTRUCTIE IS TOEGESTAAN
VOOR KLANTEN EN PARTNERS VAN AULIS LUNDELL OY ONDER VERMELDING VAN DE BRON.
WIJ BEHOUDEN ONS HET RECHT VOOR OM VERANDERINGEN AAN TE BRENGEN IN DE
AFBEELDINGEN EN DE BEGELEIDENDE TEKST.**

