

MODULAR
APARTMENTS
VERSION A





ENZO takes on all aspects of architecture: design, urbanism, landscapes and interiors. We make sure the building and its surroundings are one integrated design. With inspiration and our full attention we bring this integrated approach into practice. We don't do this alone, but together with our business and private clients. And together with our team. Meanwhile the ENZO team counts 18 colleagues. The name ENZO reflects the team-feeling. 'We didn't want to become architecture firm Van Rijn and Abdul. We do it together.

ENZO architectuur **N** interieur

+31 (0)172 50 30 90
info@enzoarchitecten.nl



Aulis Lundell Ltd is a leading Scandinavian manufacturer of cold rolled LGS profiles, sustainable offsite modular buildings and prefabricated panelized systems.

The company is a Finnish family business and has delivered LUNDELL-PROFILE products manufactured from hot dip galvanized steel plate by roll forming technology since 1980.

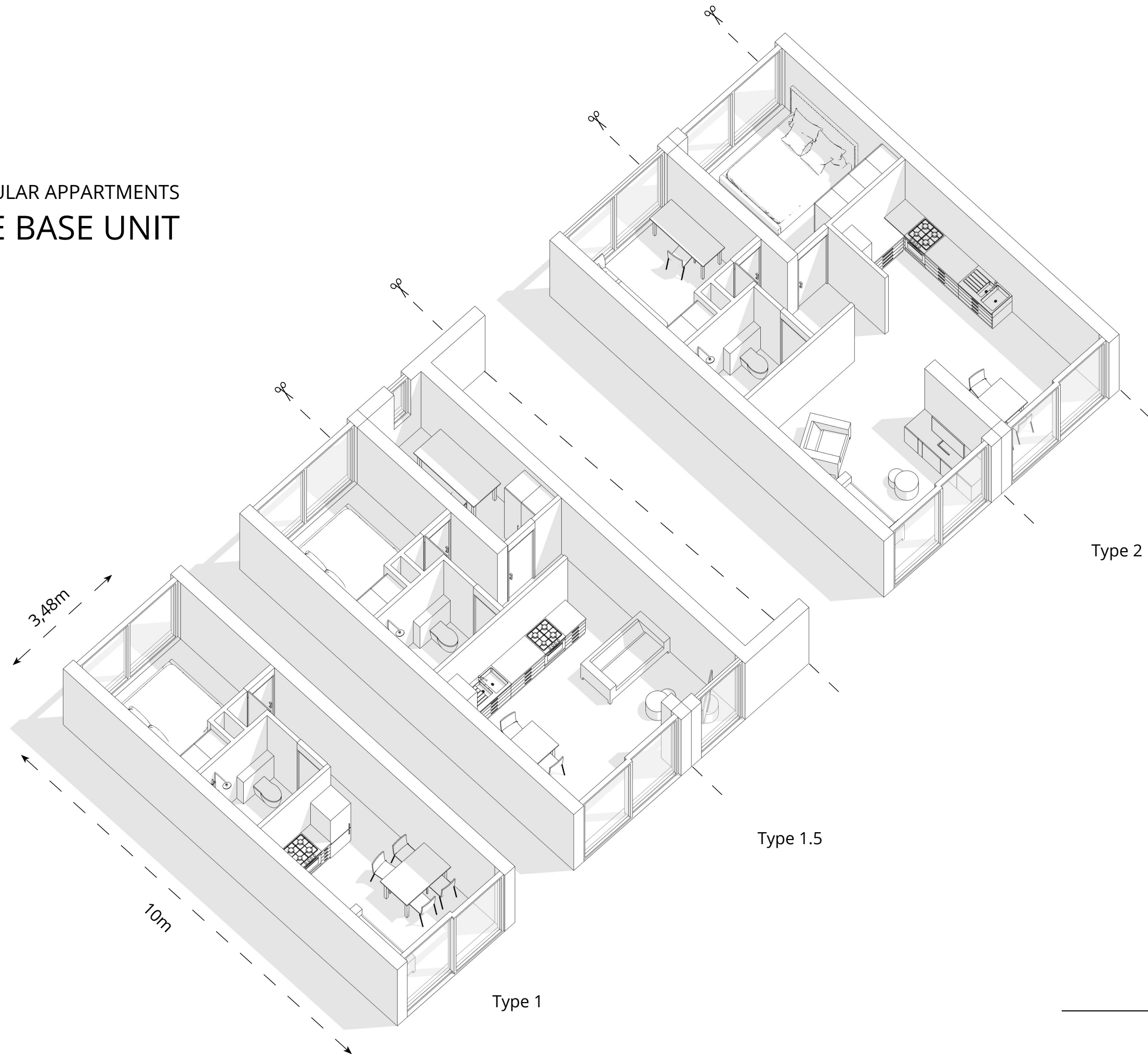
Aulis Lundell Ltd is located in Lohja, Finland and operates in 6000 m2 of product facilities. Additional factory space of 5000 m2, which will accumulate the production capacity of both modules and panels dramatically, is under construction and will be ready in summer 2023 to meet the demands of MMC customers throughout Europe.

Aulis Lundell Oy

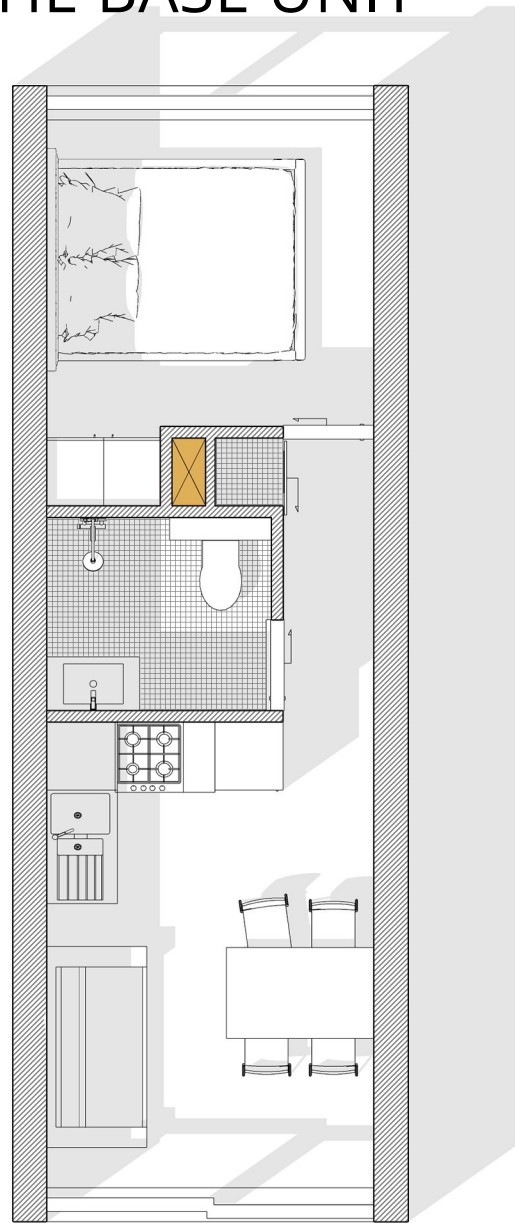
Edzo Bosma

+31 (0)85 021 09 01 (Tel)
+31 (0)6 5105 4280 (Mob)
edzo.bosma@aulislundell.com

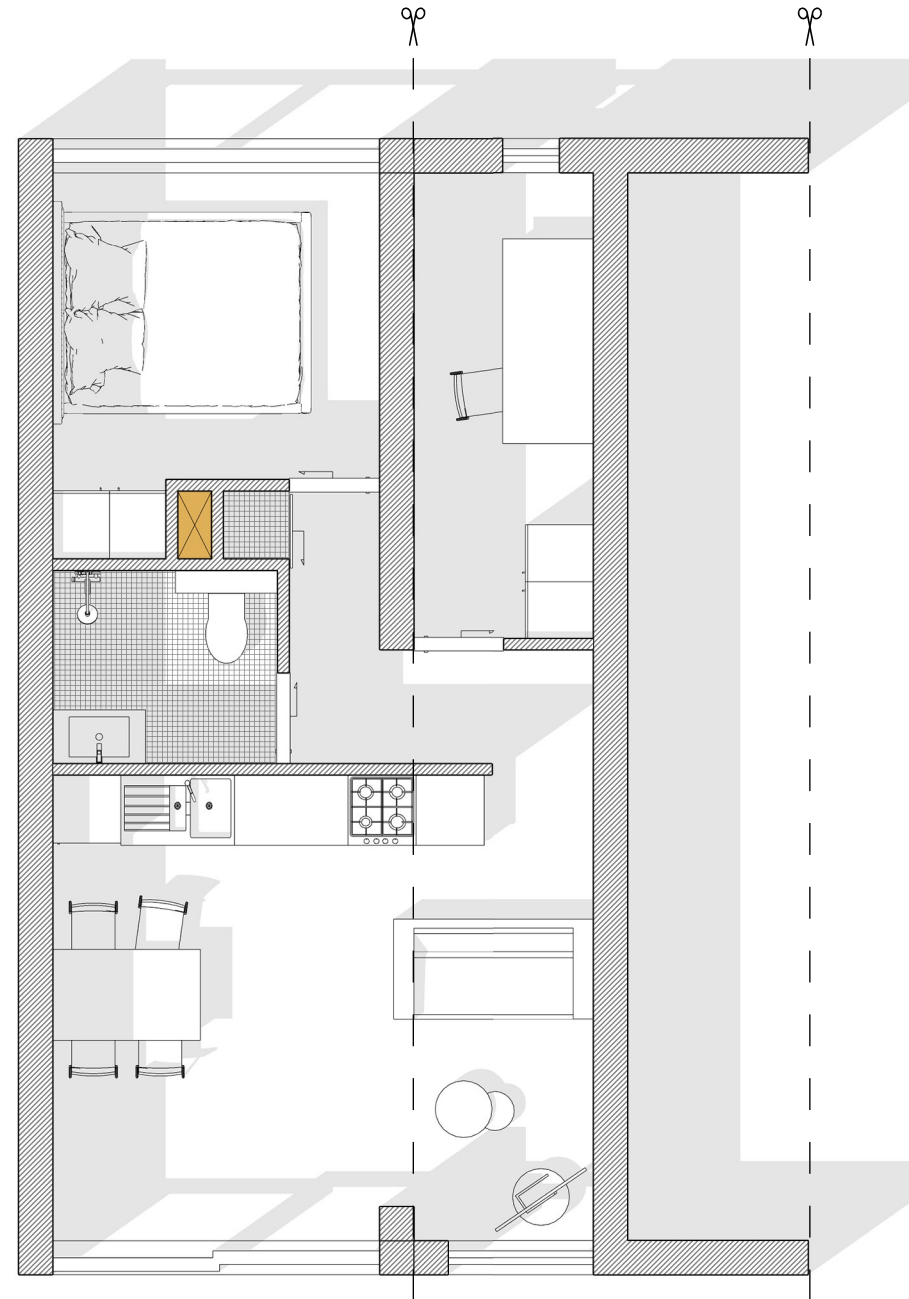
MODULAR APPARTMENTS
THE BASE UNIT



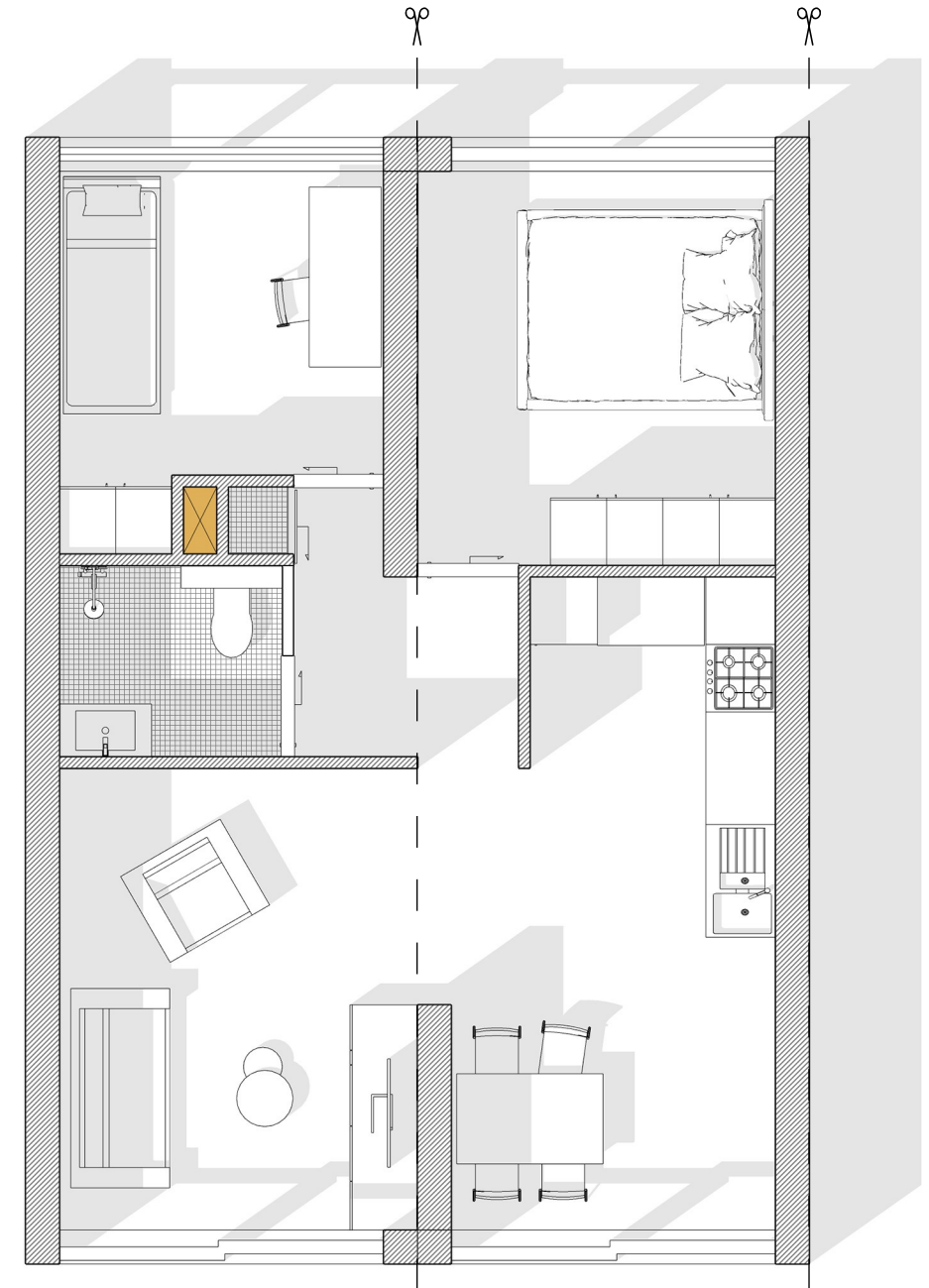
MODULAR APARTMENTS THE BASE UNIT



Type 1



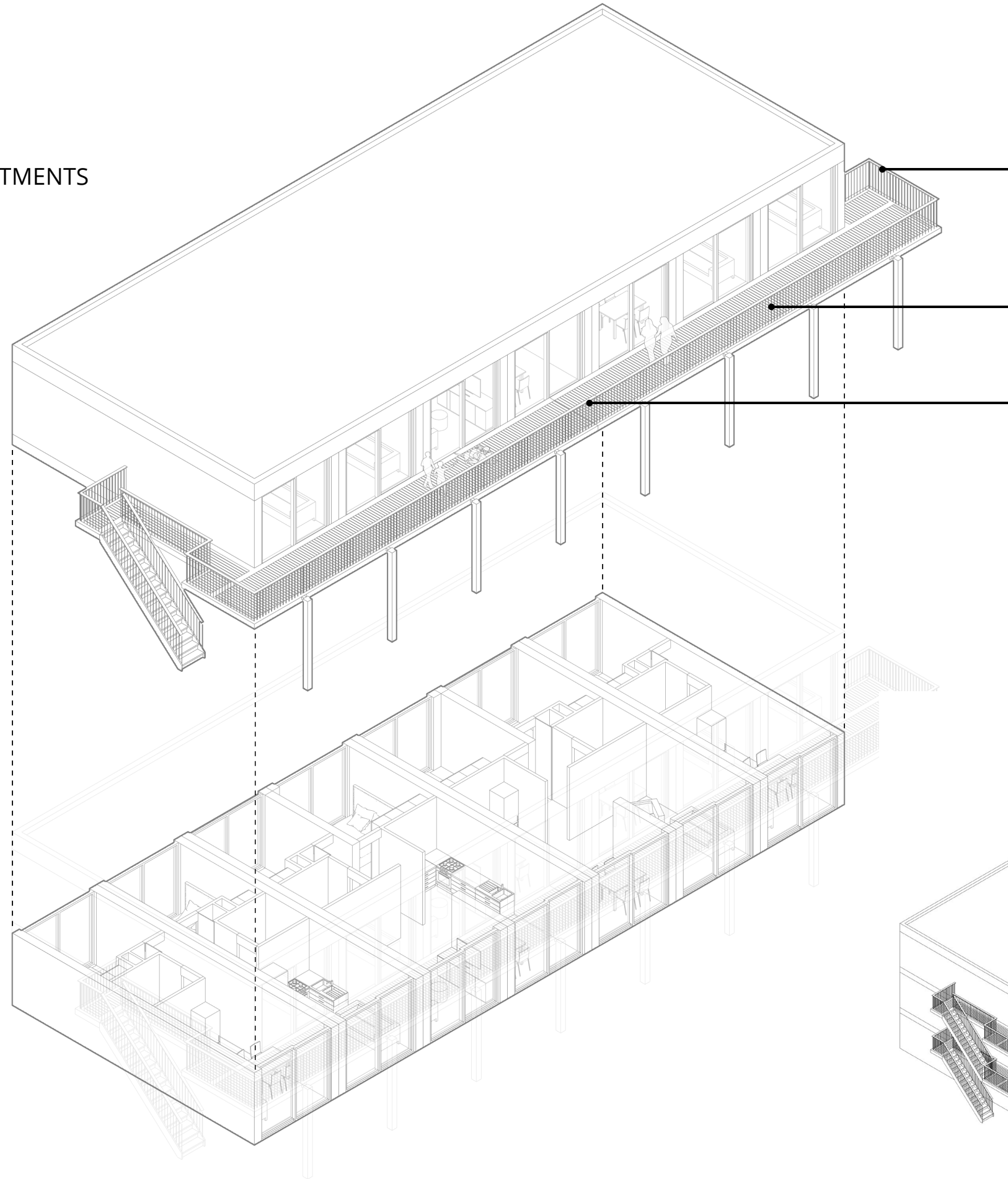
Type 1.5



Type 2



MODULAR APPARTMENTS STACKING

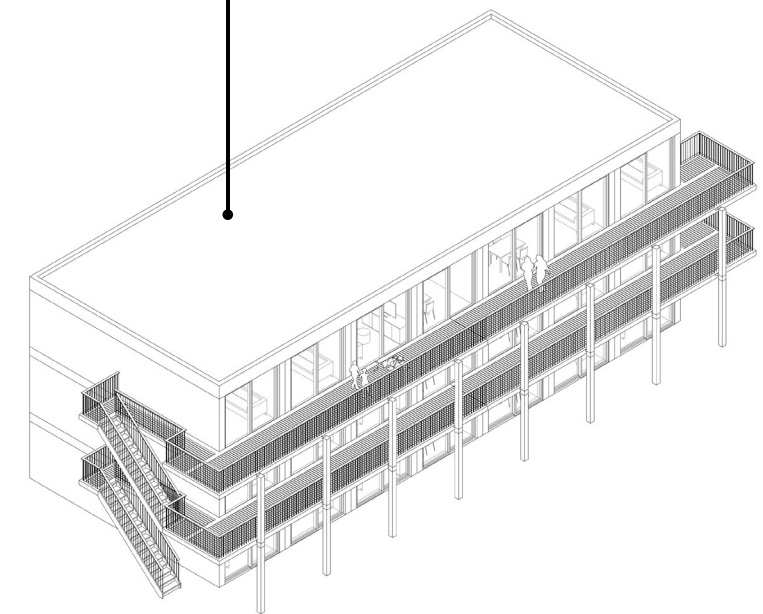


The galleries can have both one or two stairways.

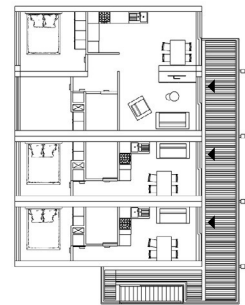
Every next floor gets a gallery.

The galleries are extra wide and therefore also function as outside space for the apartments.

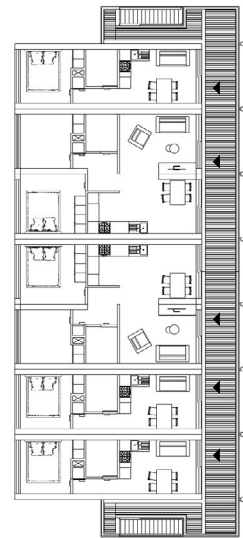
Stacking up to 3 layers without the need for supplementary construction.



MODULAR APPARTMENTS LAYOUT

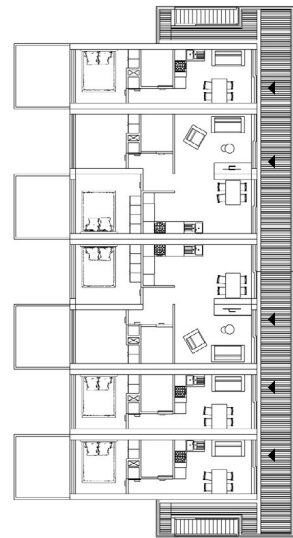


Gallery basic



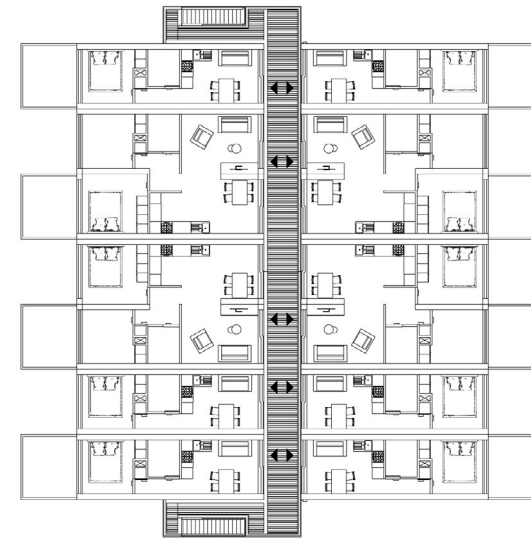
Gallery w/ double stairway

For larger series of appartments double stairways can be applied.



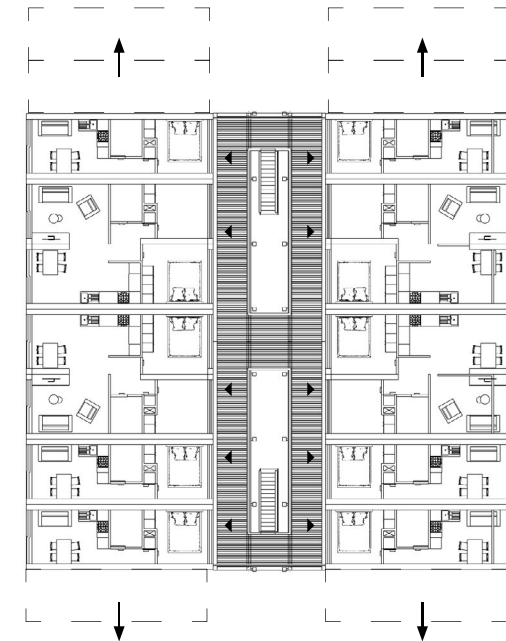
Balconies

Outside space is mandatory. This can be created by an extra wide gallery or by balconies for the appartments.



Mirrored layout

The gallery can be shared with another row of appartments.



Mirrored layout alternative

For larger rows of appartments it would be intresting to relocate the staiways. This would also create a lighther space in between the appartments.



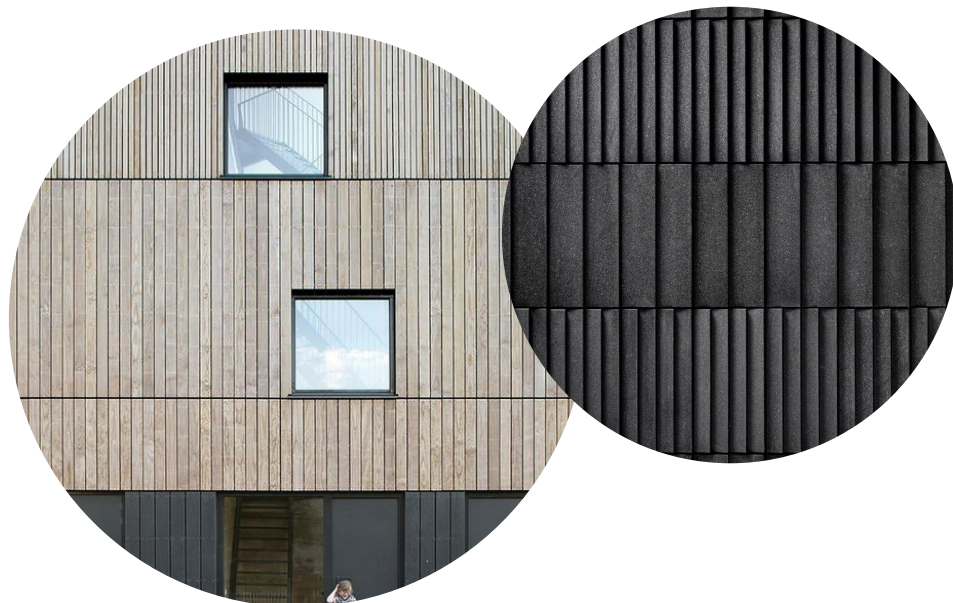
MATERIALS IMPRESSIONS



Wood cladding - Planks of different sizes - two tones to distinguish openings in the facade.



Thin bricks - Lightweight brick facade
Feldhaus klinker - Thin bricks



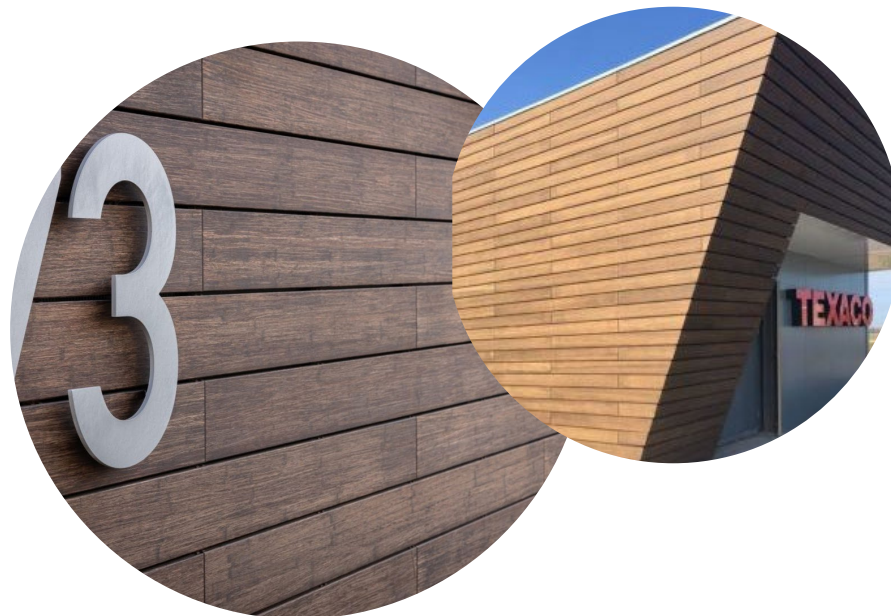
MATERIALS IMPRESSIONS



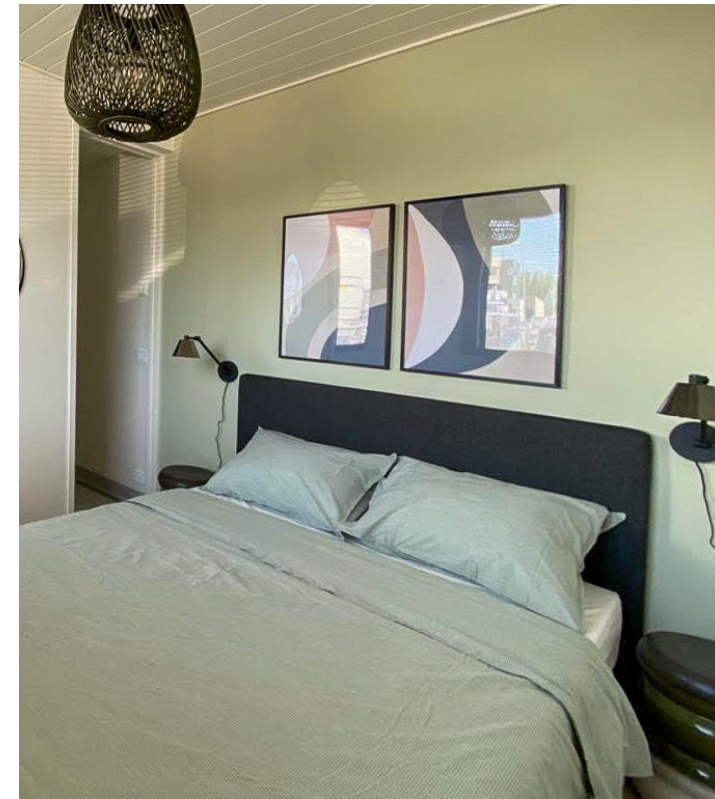
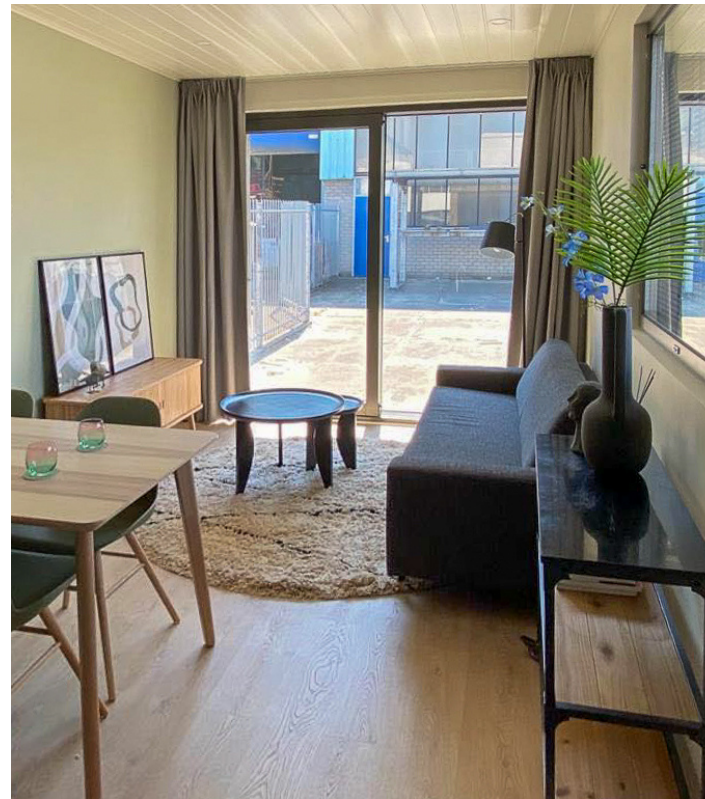
Bamboo Cladding - Comparable to an ordinary wood facade but reducing the carbon footprint *Moso Bamboo - Bamboo x-treme cladding*



SemperGreenwall - Green facade system *SemperGreenwall Outdoor*

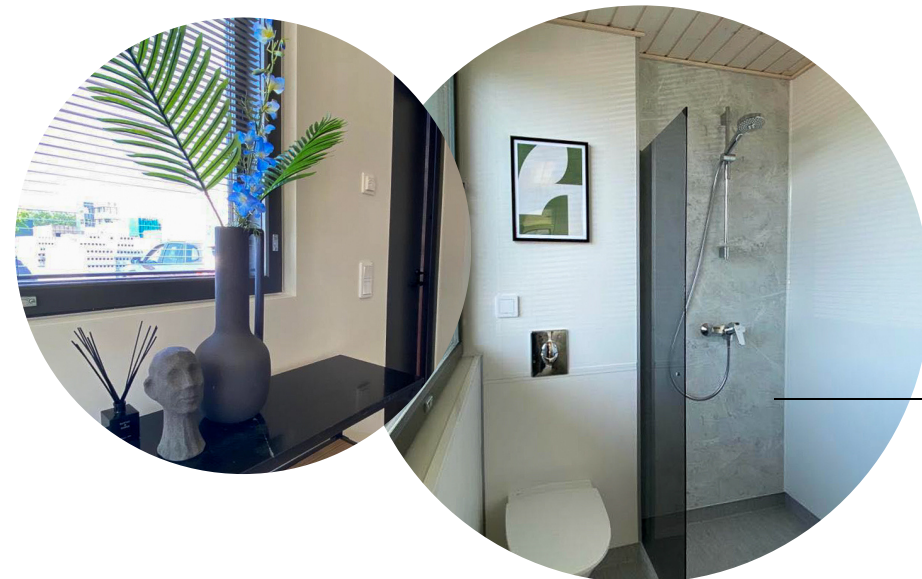


MATERIALS INTERIOR



Interior design : different options - *make your home beautiful*

We offer the interior creation of your room



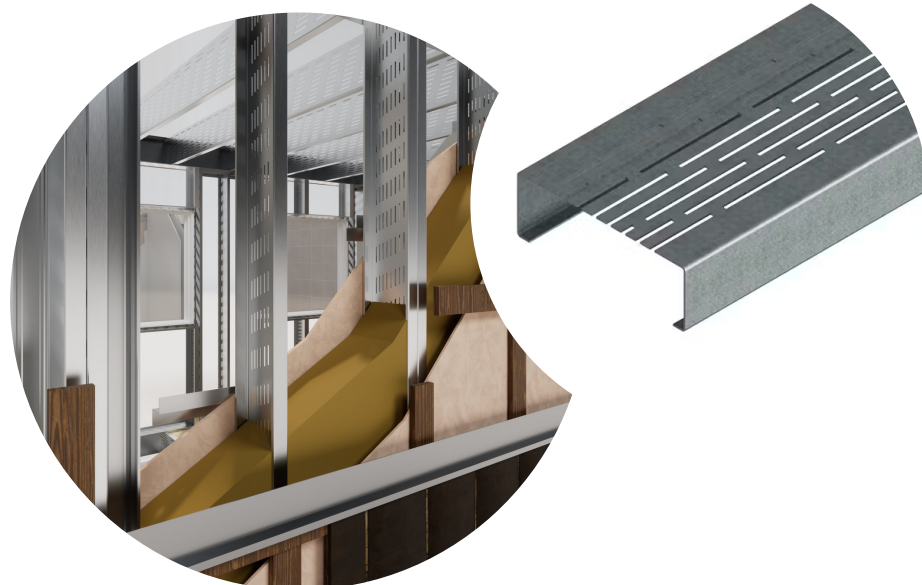


MATERIALS

STEEL STRUCTURE



- U-values of structures: 0,11-0,18



- Light steel structures support carbon neutral construction and Aulis Lundell has already achieved 2025 EU low-carbon regulations in its award winning house Pyörre 2021
- Steel is 100% recyclable material and company uses 30% recycled steel
- Part of our steel products is 100% recycled, carbon neutral steel
- We have our own 13 roll-forming machines with company inventions, such as a perforation of "Thermo profile" for building structures
- A unique structure "Thermoprofile" is a core structure of Lundell LUNDELL XMOD modular buildings for roofs, floors and walls, and can be used for high-rise buildings as a thermal cover (for example, in column and slab buildings)
- All modular buildings can be stackable, up to 17 floors
- 40 years of building system development and manufacturing experience
- Quality policy includes ISO 9001:2015, EPD and CE certificates
- Offsite roll-forming, manufacturing, and assembly of modules onsite is safe and fast
- Steel allows to use any cladding and interior boards and materials: brickslips, wood, composite or metal
- Steel structure building can stand 100 years and more
- Company has fire and acoustic tests and solutions for own structures
- All products have an EPD and CE certificate. Company has ISO 9001-2015 certificate

STRUCTURAL STEEL COMPONENTS

DECLARATION OF PERFORMANCE

in accordance with Construction Products Regulations (EU)
No 305/2011 N° 004_DoP_1090

- 1. **Unique identification code of the product type:**
LUNDELL PANEL
- 2. **Product types:** See table in point 9
- 3. **Intended use:** External load bearing walls
- 4. **Manufacturer:**
Aulis Lundell Oy, LUNDELL-PROFILE, Tarrankuja2, 08100 Lohja, FINLAND
- 5. **Authorised representative:** N/A
- 6. **Verification of constancy:** 2+
- 7. Determination of the product type, on the basis of type testing and factory production control (FPC), in accordance with EN 1090-1:2009+A1, has been performed by the Eurofins Expert Services Oy 0809-CPR-1079:
- 8. **European Technical Assessment:** N/A
- 9. **Declared performance:**

Essential characteristics	Declared performance	Harmonised technical specification/ Specific Technical Documentation
CE Designation :	PANEL 275, 300, 325	EN 1090-1:2009+A1:2011
Reaction to fire:	A1	EN 1090-1:2009+A1:2011
Fire resistance:	REI60	EN 1090-1:2009+A1:2011
Material strength Re / Rm:	≥ 350 Mpa / ≥ 420 Mpa	None EN 1090-1:2009+A1:2011
Environmental impact:	Hazardous substances	None EN 1090-1:2009+A1:2011 -
	Indoor emissions	Yes
	Recyclable:	
Material specification:	S350GD+Z, standard EN10346:2009	EN 1090-1:2009+A1:2011
	According to suitable EN	
Weldability:	standard	
Durability:	EC3	
Tolerances on dimensions and shape:	EN 1090-2, EN 10162	EN 1090-1:2009+A1:2011
Execution class:	EN 1090-2, EXC2	EN 1090-1:2009+A1:2011

Eurofins Expert Services Oy has performed initial inspection of the manufacturing plant and factory product control and continuous surveillance, assessment and evaluation of factory production control and issued to Aulis Lundell Oy factory production control certificate 0809-CPR-1079.

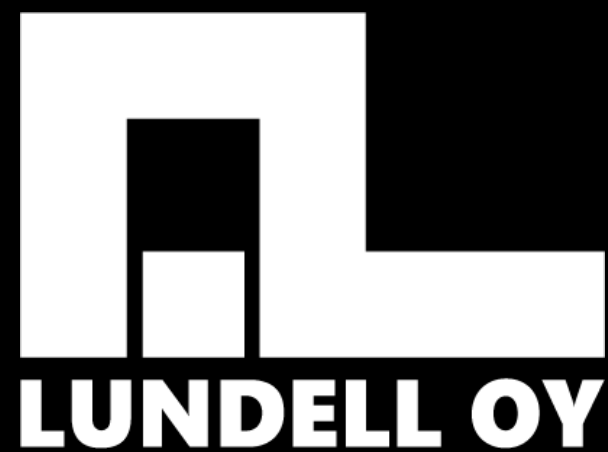
Signed for and on behalf of the manufacture


Lohja 1.7.2022, Leena Lundell, Chairman of the Board





www.enzoarchitecten.nl



www.aulislundell.com



www.interior-consult.com